

# BODLEIAN LIBRARIES

*Year in Review 2017/18*



# Contents

Introduction from Bodley's Librarian .....	I
About the Bodleian Libraries.....	2
Optimizing our spaces.....	4
<i>Creating 21<sup>st</sup> century library spaces</i> .....	7
Providing world-class collections & resources .....	8
<i>Digital resources</i> .....	10
<i>Accessing our collections</i> .....	14
<i>Researching our collections</i> .....	16
<i>Conserving our collections</i> .....	17
<i>Visiting Fellows Programme</i> .....	18
Public engagement .....	20
<i>Exhibition programme</i> .....	21
<i>Events</i> .....	27
<i>Education programme</i> .....	30
Welcoming visitors.....	32
Philanthropic support.....	35
Year in the life of the Bodleian.....	36
Accounts.....	38
Our Libraries.....	40



# Introduction from Bodley's Librarian

The Bodleian has never been 'just' a University Library. We take our responsibility to serve the information needs of the world's leading research University incredibly seriously, and we are the University's most intensively used academic service. Added to this responsibility is another: since it was established more than 400 years ago the Bodleian has played a vital role in preserving, and providing access to, the world's knowledge, for the benefit not just of the University, but for the wider world. It is this dual responsibility that marks us out as one of the great libraries of the world, and our work over the past year has reflected our local and our global efforts.

Our collections and services remained heavily used during the past year, with increased numbers of readers using our reading rooms, and a continued increase in the use of our collections. This year also saw a varied programme of initiatives to help our users engage with our services and collections, ranging from updating some of our reading rooms to the launch of new, innovative services – like the provision of real time information on reading list material or digital resources. We have also continued to evolve the ways in which we help share Oxford scholarship with the broader community, through the Oxford Research Archive (ORA) from which thousands of Oxford researchers are freely sharing their scholarship with the world.

Our collections provide a unique resource for scholarship and are also at the heart of our dynamic public programme. This year we opened major

exhibitions which allowed us to celebrate the centenary of women's suffrage, and we launched our most successful exhibition ever, with a major survey of the life and work of JRR Tolkien: whose archive we are privileged to steward.

As we look to the future we are driven by a clear vision – outlined in the Bodleian Libraries 2017-22 Strategy – that meets three key aims: to help ensure that the University of Oxford remains at the forefront of academic teaching and research worldwide; to contribute leadership to the broader development of the world of information and libraries for society; and to provide a sustainable operation of the libraries. We are confident in our plans to meet these aims and retain this high standard of care and service provision.

Our work cannot be taken forward without the generous support of the many supporters – both individuals, trusts, and foundations, who contribute to our projects and help us build our endowment, and to whom we are profoundly grateful.

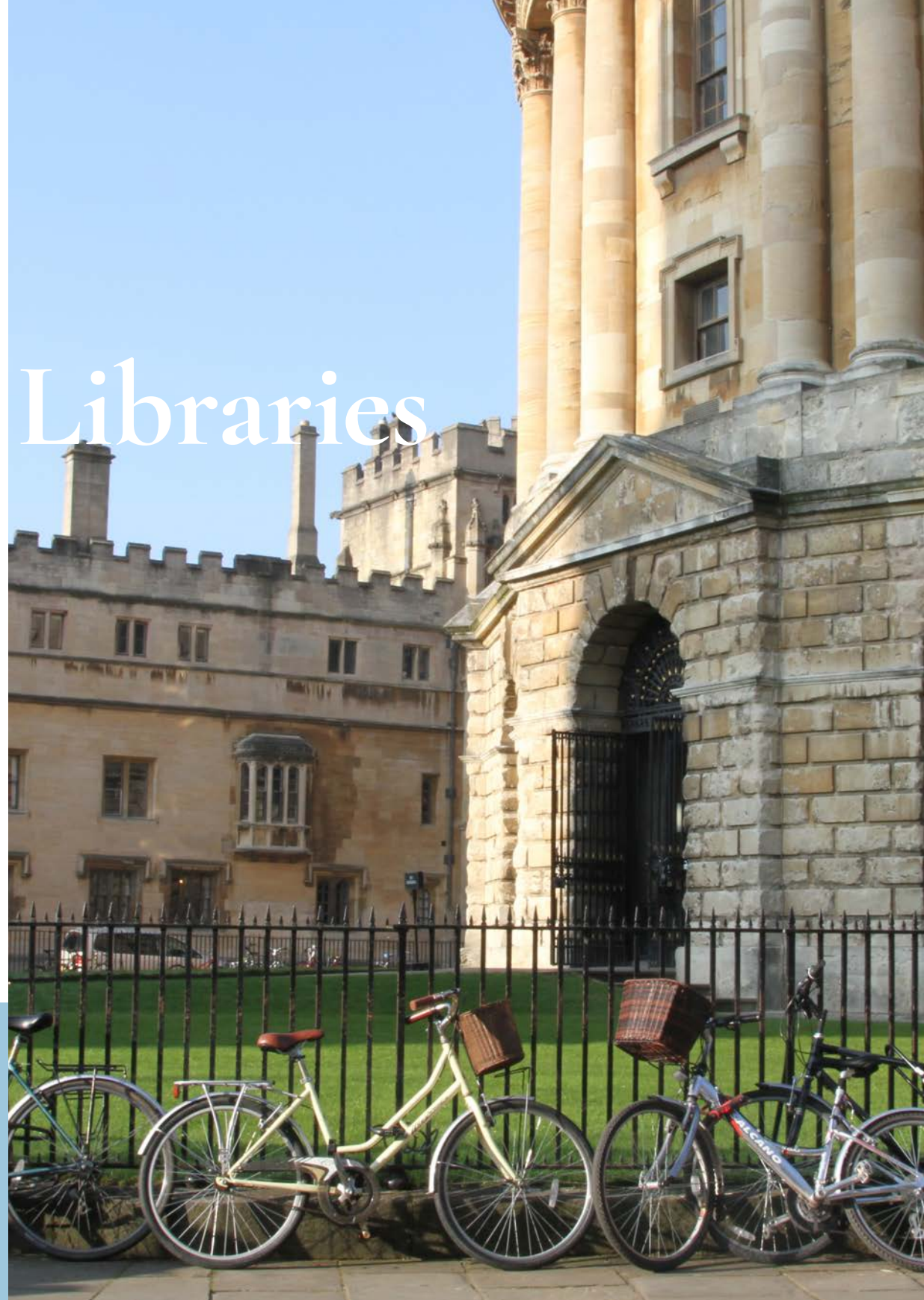
As the 25th Bodley's Librarian I am proud to lead one of the great research libraries of the world, serving the entire academic community of Oxford, but also those around the world with a curiosity to learn.



Bodley's Librarian

# About the Bodleian Libraries

The Bodleian Libraries of the University of Oxford form the largest university library system in the UK, providing a world-class resource for scholarship. In 2017/18 work continued to support learning and research within the University and the wider world of scholarship at the highest level.



# Over 400 years of history

Oxford's libraries are among the most celebrated in the world, not only for their incomparable collections of books and manuscripts, but also for their buildings, some of which have remained in continuous use since the Middle Ages.

The Bodleian Library is one of the oldest libraries in Europe, and in Britain is second in size only to the British Library, holding over 13 million printed items. First opened to scholars by Sir Thomas Bodley in 1602, it incorporates an earlier library built by the University in the 15th century to house books donated by Humfrey, Duke of Gloucester.

Since 1602 it has expanded, slowly at first but with increasing momentum over the last 150 years, to keep pace with the ever-growing accumulation of books, archives and other materials, but the core of the old buildings has remained intact. It now includes iconic buildings, such as the Radcliffe Camera (built between 1737 and 1748). Most recently, the New Bodleian building was completely renovated, with large public spaces, new academic spaces, and reopened in 2015 as the Weston Library.

Sir Thomas Bodley, recognised the need for an endowment for the Library, and laid the foundations for a tradition of philanthropy which continues to this day and underpins his vision of the Bodleian as what he called 'the republic of the learned'.



# Optimizing our spaces

The Bodleian Libraries provides 4,553 study spaces across its 28 libraries, which is an increase of 4% from the previous year. This means the Bodleian Libraries offers 345,257 study-space-hours per week in term. Over 2017/18 improvements were made to our spaces while work continues on exciting redevelopment projects.





## DUKE HUMFREY'S LIBRARY

Our most ancient and historic reading room has been used as a place of study since 1488. In order to preserve its unique scholarly atmosphere we undertook a project to replace and upgrade the lighting in this wonderful space.

The new lights improve the illumination of both the historic features of the room and individual reader spaces, and will reduce the library's carbon footprint.



## BODLEIAN LIBRARY

In the Bodleian Library a new reader common room opened in late Hilary term 2018. The room, directly accessible from the south staircase, now provides an informal space for readers to study or take a break and offers a space for readers with mobility restrictions to receive their inductions and to study with assistive technology.



## CAIRNS LIBRARY

At the Cairns Library, one of our Health Care Libraries at the John Radcliffe Hospital, improvements were made to spaces with the decommissioning of the Medical Sciences Division student terminals from the Cairns providing additional study desks with nearby power sockets for readers.

Work was also completed on collections in the following spaces:

### OLD LIBRARY

In the Lower Reading Room (Classics) the much-anticipated open-shelf collection for Late Antiquity was introduced. The main focus of this collection is the ancient world from the accession of Diocletian in 284 CE to the end of the Roman rule in the Mediterranean in 632 CE. It covers social and political history and secular literature, and aims to provide access to the major reference monographs in this area of study. The collection will develop and grow in the future according to usage, scholarly demand and recommendations by readers.

### SACKLER LIBRARY

In the Sackler Library, the Papyrology Library has had a major reorganisation and reclassification, using the 'checklist of editions', which is a standard system used in various papyrological libraries around the world, and which has made the collection more intelligible and useable for students of Greek and Roman papyri. Archival descriptions of the contents of the Sackler archive have also been completed, which will be of particular interest to people studying the history of Classical archaeology in the 20<sup>th</sup> century.





# Creating 21<sup>st</sup> century library spaces

A number of projects are underway to refurbish existing spaces or build exciting new spaces in order to create a 21<sup>st</sup> century library service. These include:

## PHILOSOPHY AND THEOLOGY FACULTIES LIBRARY (PTFL) & THE ROQ

In the PTFL a significant milestone was achieved as staff completed a four-year project to reclassify the three previous openshelf sequences into a single (Library of Congress) classification sequence. This work is a key preparatory step for the eventual move to the new Humanities building at the Radcliffe Observatory Quarter and makes it much easier for readers to navigate the PTFL's open-shelf collection.



## RADCLIFFE SCIENCE LIBRARY (RSL)

At the Radcliffe Science Library (RSL) a major redevelopment project is underway which will transform the historic library by creating exciting new spaces for engagement and for housing the University's collections, while modernizing existing library areas. This flexible space will meet the changing needs of students and researchers in the sciences and beyond, and will support GLAM and the University's role in widening engagement.

Feasibility stage for this development commenced in 2018 and over the year work to support this project included extensive book moves and the building of an external lift. The lift will improve goods access from the parking area of the courtyard in front of the Museum of Natural History to the underground levels of the library.

Plans are now underway to develop Parks College, a new graduate college in the Radcliffe Science Library. For more information visit [www.ox.ac.uk/about/organisation/future-projects-parks-college](http://www.ox.ac.uk/about/organisation/future-projects-parks-college)

## AWARD WINNING BUILDINGS: THE WESTON LIBRARY

The Weston Library, which reopened in 2015 after a three-year refurbishment, was one of six buildings to be shortlisted for the RIBA Stirling Prize 2016, the most prestigious prize in British architecture. The Bodleian Libraries were also shortlisted for RIBA Client of the Year 2016.

Since reopening, the building has also been recognised with a number of major awards including:

- RIBA National Award 2016
- RIBA South Building of the Year 2016
- RIBA South Regional Award 2016
- Architects' Journal 2016 Retrofit Award (Listed Building Over £5million category)
- Architects' Journal 2016 Building of the Year
- Oxford Preservation Trust Award 2015
- Civic Trust Award 2017

# Providing world-class collections & resources

The Bodleian's collections are unparalleled and growing. By the end of 2017/18 the Bodleian Libraries had more than 13 million (13,121,097) printed items in its collection, an increase of 218,789 over the year. It now holds 27,625 line metres of manuscripts and archives.



Over 2017/18 the Bodleian Libraries continued to develop new resources and enhance existing resources to meet the needs of its readers.

## IMPROVING OUR ONLINE CATALOGUE

With over 14 million searches annually, SOLO, the Bodleian Libraries main online catalogue, is one of the key research tools at Oxford University, and an invaluable resource for users in over 200 countries.

In order to improve its functionality, the team behind SOLO worked closely with both users and library staff on a project to create a new clean and modern interface (UI), for SOLO. Informed by user experience testing with real users, the beta new SOLO with improved functionality was launched in Trinity term 2018, to become the default option for SOLO in 2018/19.

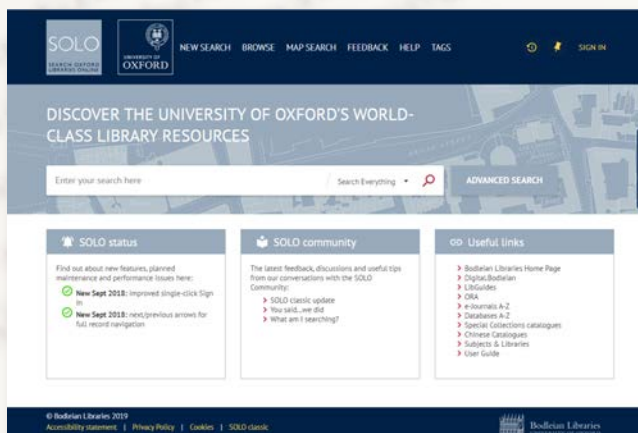
<http://solo.bodleian.ox.ac.uk>



## BODLEIAN DATA LIBRARY SERVICE

Work continued to develop the Bodleian Data Library service which, with access to over 500 data sets, helps researchers and students to locate and access data (available through commercial suppliers, open data portals, specialist archives, restricted data repositories etc) and to consider the place of research data management in their work (including advice on data management plans).

[www.bodleian.ox.ac.uk/data](http://www.bodleian.ox.ac.uk/data)



## ONLINE READING LISTS

Development began on an online reading list management system which enables students to access their reading lists – linked through to full-text resources and catalogue availability data – in an accessible, digital environment. Pilots, to assess the benefits and challenges, ran across the four divisions in Michaelmas term 2017. The project includes the development of a roadmap for a wider University roll-out from 2019 and the transition of the service to business-as usual.

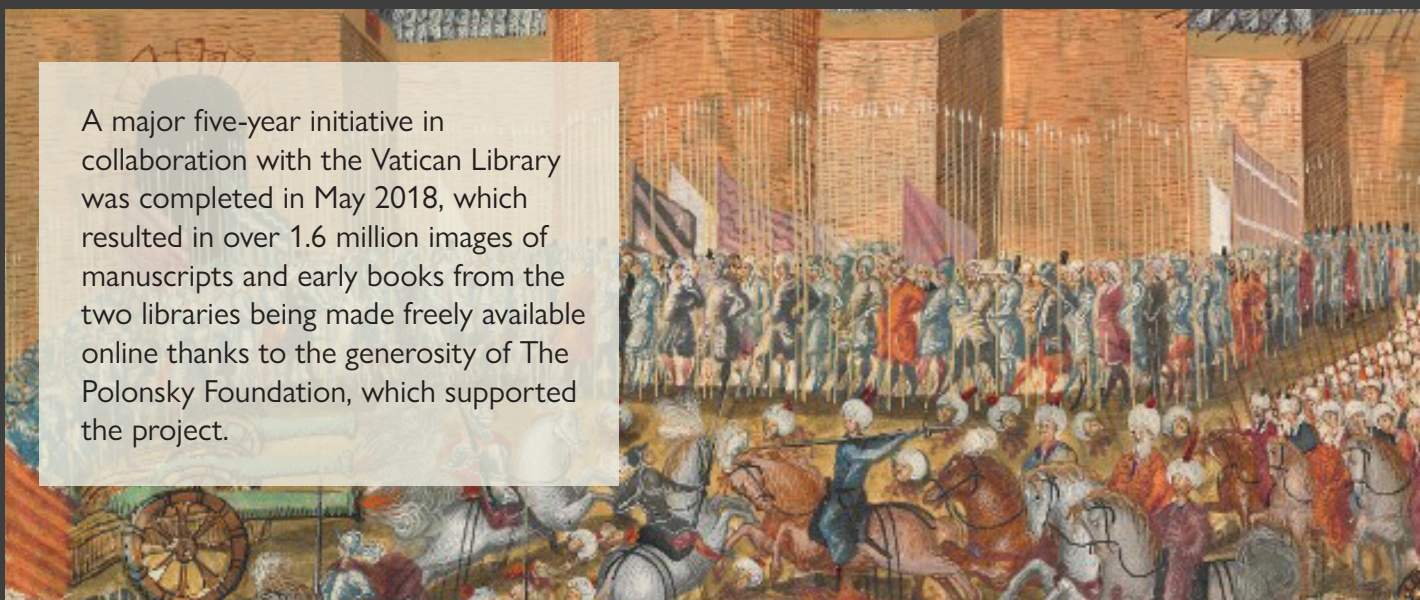
# Digital Resources

The Bodleian's investment in digital resources has grown dramatically in order to meet reader demand. At the end of 2017/18 there were 1,352,556 electronic books (an increase of 8% from the previous year). Journal subscriptions have also grown – by 16% in the last year, to 127,658 – and the number of journal titles available electronically to users is now 99,118, an increase of 21% from last year. The number of databases now available to readers is 1,497 compared with 1,304 in the previous year.

## NEW DIGITAL RESOURCES

Nine separate online text encoded (TEI-XML-based) catalogues of the Bodleian's manuscript materials were created this year. The first catalogue, the Western medieval manuscripts catalogue funded by The Tolkien Trust, launched in early 2017/18, with the remaining eight catalogues – Fihrist (Arabic and Persian), Hebrew, Armenian, Georgian, Tibetan, Sanskrit, Shan and Genizah – rolling out across the year.

In order to provide access to the OXFAM archive, our Wellcome Trust funded project has enabled digitized versions of 704 Oxfam campaigns to be made available in Digital Bodleian (<http://digital.bodleian.ox.ac.uk>) in July 2018.



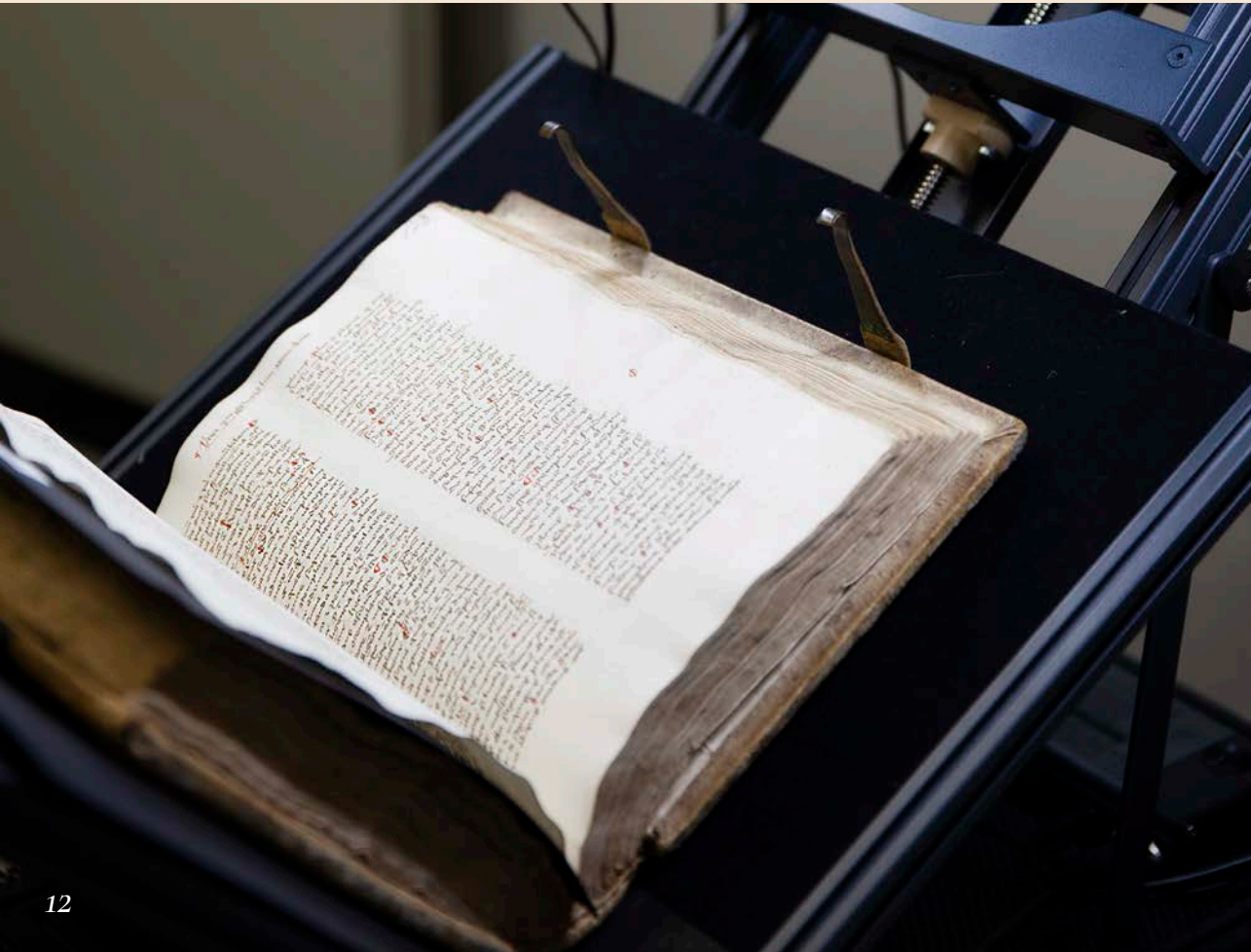
A major five-year initiative in collaboration with the Vatican Library was completed in May 2018, which resulted in over 1.6 million images of manuscripts and early books from the two libraries being made freely available online thanks to the generosity of The Polonsky Foundation, which supported the project.



The new Oxford Text Archive (OTA) went live in late Trinity term 2018 and contains over 60,000 full XML early-printed works created by the Text Creation Partnership. It is based on the English Short-Title Catalogue of works imaged in Early English Books Online (EEBO) and the Eighteenth Century Collections Online (ECCO). It also contains major linguistic corpora such as the British National Corpus.

## DIGITAL PRESERVATION POLICY

The preservation of knowledge is at the heart of the Bodleian's mission. As the Bodleian's collections move increasingly into the digital format we need to be at the forefront of digital preservation. Work to develop a new Digital Preservation Policy was led by the Bodleian's Polonsky Fellows in consultation with colleagues across the Bodleian Libraries. This will underpin related work on our Digital Preservation Roadmap to support the Bodleian Libraries' current five-year strategy. The experience gained from auditing the Bodleian Libraries is also being used by the Polonsky Fellows to inform a six-month project of analysis and planning around digital preservation. It is intended to support the GLAM Digital Strategy in collaboration with colleagues at the Ashmolean Museum, the History of Science Museum and the Botanic Garden.





## OXFORD RESEARCH ARCHIVE (ORA)

The Bodleian Libraries continued to provide a vital service to scholars in the form of ORA, the University's institutional repository, where members of the University can deposit a wide range of research, including articles, conferences, theses and data. There were more than 41,000 complete works in ORA available to the public by the end of 2017/18. Use of ORA has grown dramatically, with 246,511 downloads of full-text items in ORA in the last year.

The University also launched a new public interface for ORA which offers an improved appearance and new features that enable better access to content as well as expanded usage metrics to indicate hits and downloads of individual works.

The libraries continued to promote ORA through events like Open Access Oxford week (11–15 Jun 2018), with a series of events to discuss developments in research dissemination and the benefits (and challenges) of open access.

<https://ora.ox.ac.uk>

# Accessing our collections

Cataloguing our collections opens them up to readers by making them easier to search and discover. Materials catalogued this year include the first series of the archive of folklorists Iona and Peter Opie, compiled thanks to a generous Wellcome Trust grant.

Also newly catalogued and published were: the Archive of Winifred Gill, Walter Benington photographic portraits, and the Sir William Dunn School of Pathology: Oral Histories collection, gathered in 2017 as part of the '75 Years of Penicillin in People' project funded by the Wellcome Trust (when the Bodleian Library commissioned a series of oral history interviews with scientists, administrators and technicians who work, or formerly worked, at the University's Sir William Dunn School of Pathology).





As part of the preparation for transfer to the Book Storage Facility, improved cataloguing and more detailed inventory was carried out on collections of material in Slavonic languages and literatures and Indian government publications. Once moved, the material will be easier to identify in SOLO, the Bodleian Libraries' online catalogue, and requestable to move of the libraries.



Ongoing cataloguing this year includes the archives of:

- Oxfam
- Jenny Joseph
- Stafford Cripps
- Clement Attlee
- Archibald Clark Kerr, 1st Baron Inverchapel
- Toby Low, 1<sup>st</sup> Baron Aldington
- European Conservatives Reform Group
- Bruce Chatwin (additions)
- Martin Barber
- Edward Heath

There was also a new year release of items in the Conservative Party Archive.



As part of an ongoing project to make older catalogues available online, a range of catalogues were digitized in the past year, including the Archive of the British Association for the Advancement of Science, the Archive of the Oxford Committee for Nuclear Disarmament, and the Archive of the Association for the Education of Women in Oxford, as well as the papers of Sylvia Henley, James Blish and Emily Hobhouse.

Recent acquisitions include two signed and captioned albumen prints by Julia Margaret Cameron (*right*); the archive of photographer Daniel Meadows ([www.photobus.co.uk](http://www.photobus.co.uk)); and the archive of journalist, broadcaster and writer Arturo Barea.



# Researching our collections

## CENTRE FOR THE STUDY OF THE BOOK

The Centre for the Study of the Book hosts a programme of academic and educational outreach from Bodleian Special Collections. These activities are designed to bring together the expertise of library curators, researchers and practitioners to make the collections accessible for learning at all levels. Events in the programme are presented in collaboration with colleges and faculties of the University, with the Oxford Bibliographical Society and with research projects based at Oxford and other universities.

The Centre for the Study of the Book is generously supported by a number of individual donors to whom the Library is very grateful.





## Conserving our collections

In the past year almost 8,000 items (7,848) were treated by the Bodleian's Conservation workshop and the Bodleian's Conservation and Collection Care team, and over 39,000 archive boxes were made to house our materials.

### HIGH-TECH IMAGING REVEALS PRE-COLONIAL MEXICAN MANUSCRIPT HIDDEN BY VIEW

Research on our collections continued with a significant discovery of note, made in late 2016 by the Bodleian's Head of Heritage Science, David Howell. Using a hyperspectral scanner Howell discovered a rare Mexican codex dating from before the colonization of the Americas.

The project, in partnership with universities in the Netherlands, revealed the codex, which had been hidden from view for almost 500 years, concealed beneath a layer of plaster and chalk on the back of a later manuscript known as the Codex Selden and held in the Bodleian Libraries. Since the 1950s it has been suspected that the Codex Selden is a palimpsest, which is an older document that has been covered up and reused. No other technique has been able to unveil the concealed narrative in a non-invasive way until now when the Codex Selden was confirmed as a palimpsest. The story gained national and international media interest with over 30 articles in major newspapers and scientific publications.



# Visiting Fellows Programme

The Bodleian Visiting Fellows Programme further integrates research in Bodleian collections with the ongoing intellectual life of the libraries and the University by offering residencies in the Weston Library of between one and six months. The residencies allow fellows to pursue an uninterrupted period of study focusing on the Bodleian's Special Collections, and to take advantage of exchanges with University researchers and library curatorial and conservation staff.

The Bodleian's Visiting Fellows Programme is generously supported by a number of individual donors and organisations.





Thanks to the generosity of several benefactors, in 2017/18 the libraries granted funds to 33 visitors under the following fellowships:

- the Humfrey Wanley Fellowship
- the Byrne-Bussey Marconi Fellowship (for the study of communications and science)
- the David Walker Memorial Fellowship (for Early Modern History)
- the Sassoon Fellowship
- the Bahari Fellowship in Persian Arts of the Book
- the Royal Bank of Canada Foundation – Bodleian Fellowship.

In addition, the libraries welcomed scholars from these learned societies: the Renaissance Society of America, the British Society for Eighteenth-Century Studies and the Georgian Group.

Topics covered by the Visiting Fellows included:

- Thinking 3D, from Leonardo to the Present
- Climate science in 17<sup>th</sup>-century England
- Marketing 'wireless' communication in the early 20<sup>th</sup>-century.



## HERITAGE SCIENCE

The Bodleian Libraries Heritage Science team completed a major milestone last year: the Painting by Numbers project, funded by the Leverhulme Trust. The project included an exhibition and a major publication. As well as these academic outputs, Heritage Science carried out a huge amount of routine analysis which included revealing texts and pigment identification. The team's collaboration – with Professor Andrew Beeby from the University of Durham, Dr Kate Nicholson from the University of Northumbria and Professor Tony Parker from Rutherford Appleton Laboratory – included using the bespoke Raman spectrometer from Durham which allowed an ever-growing list of illuminated manuscripts to be characterized. Much progress was also made, with research led by a DPhil student, in utilizing the Headwall hyperspectral imaging equipment for identifying and mapping pigments on a range of materials across GLAM collections.

# Public engagement

The Bodleian Libraries run a lively programme of engagement activities to showcase its collections and to support Public Engagement with Research. This activity ranges from exhibitions and displays to events, lectures, workshops and symposia.

## CHILDHOOD

'born with a talent for language'

The display panel features a collection of historical artifacts and text. At the top, the title 'CHILDHOOD' is followed by the quote 'born with a talent for language'. Below this, several items are arranged: a small photograph of two children, a newspaper clipping with the name 'Miss J. B. White', a portrait of a woman, a circular portrait of a man, and several pages of handwritten text. At the bottom of the panel, there are three columns of small text, likely providing context or details about the items.



# Exhibition programme

In the last year a record 369,842 visits were made to the Bodleian's physical exhibitions (up 7% on the previous year) and there were 71,097 visits to online exhibitions. Highlights include two major exhibitions at the Weston Library:

## TOLKIEN: MAKER OF MIDDLE-EARTH

*Tolkien: Maker of Middle-earth* (1 Jun–28 Oct 2018) brought together the most extensive collection of materials related to J.R.R Tolkien for public display since the 1950s. The exhibition explored Tolkien's amazing legacy from his genius as an artist, poet, linguist and author to his academic career and private life. It included an array of draft manuscripts, striking illustrations and maps drawn for his publications.

The display featured his famous works, *The Hobbit* and *The Lord of The Rings*, as well as his early abstract paintings from *The Book of Ishness*, the touching tales he wrote for his children. Also included were rare objects that belonged to Tolkien, exclusive fan mail and private letters.

Made possible with the support of The Tolkien Trust, this was the Bodleian's most successful exhibition to date. It was hugely popular, welcoming more than 138,000 visitors and garnering glowing reviews in *The Times*, *The Guardian* and *The Wall Street Journal*, as well as a 5-star review in *The Telegraph*.

<http://tolkien.bodleian.ox.ac.uk>



## SAPPHO TO SUFFRAGE: WOMEN WHO DARED

6 Mar 2018–24 Feb 2019

To mark 100 years since some women got the vote, this exhibition celebrated the achievements of women who dared to do the unexpected, and showed some of the Bodleian's most remarkable and treasured items.



## Weston Library – Other exhibitions 2017/18:

**Which Jane Austen?** 23 Jun–29 Oct 2017, ST Lee Gallery

**Bodleian Treasures: 21 Pairs and a Tropical Forest**

18 Mar 2017–11 Feb 2018, The Treasury

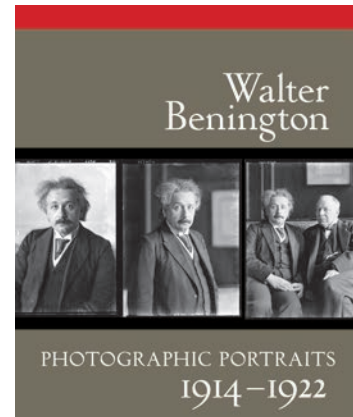
**Martin Parr: Oxford** 8 Sept–22 Oct 2017, Blackwell Hall

**Designing English** 1 Dec 2017–22 Apr 2018, ST Lee Gallery



## Martin Parr Oxford

Weston Library  
8 September – 22 October  
Admission free  
[www.bodleian.ox.ac.uk/whatson](http://www.bodleian.ox.ac.uk/whatson)



## Walter Benington



PHOTOGRAPHIC PORTRAITS  
1914–1922





## Smaller displays took place in the Proscholium (Old Library), Blackwell Hall (Weston Library) and the RSL:

**City of Aquaint:**  
**Evelyn Waugh's Oxford**  
 26 Aug–22 Oct 2017, Blackwell Hall  
**Revealing Hidden Oxford**  
 9 Sept–5 Nov 2017, Proscholium  
**Passchendaele: 100 Years On**  
 28 Oct–26 Nov 2017, Blackwell Hall

**The Full Picture: Oxford in Portraits**  
 24 Nov 2017–7 Jan 2018, Blackwell Hall  
**Making Manuscripts for a Prince of the Black Sheep**  
 11 Nov 2017–14 Jan 2018, Proscholium  
**Redesigning the Medieval Book**  
 1 Dec 2017–11 Mar 2018, Blackwell Hall

**Walter Bennington:**  
**Photographic Portraits 1914–1922**  
 20 Jan–25 Mar 2018, Proscholium  
**Looking at Euclid**  
 19 May–15 Jul 2018, Blackwell Hall  
**Curiosity Cabinets**  
 9 Jun–27 Aug 2018, Proscholium

**Diffraction**  
 (Arts University Bournemouth)  
 29 Mar–17 Jun 2018,  
 Radcliffe Science Library (RSL)







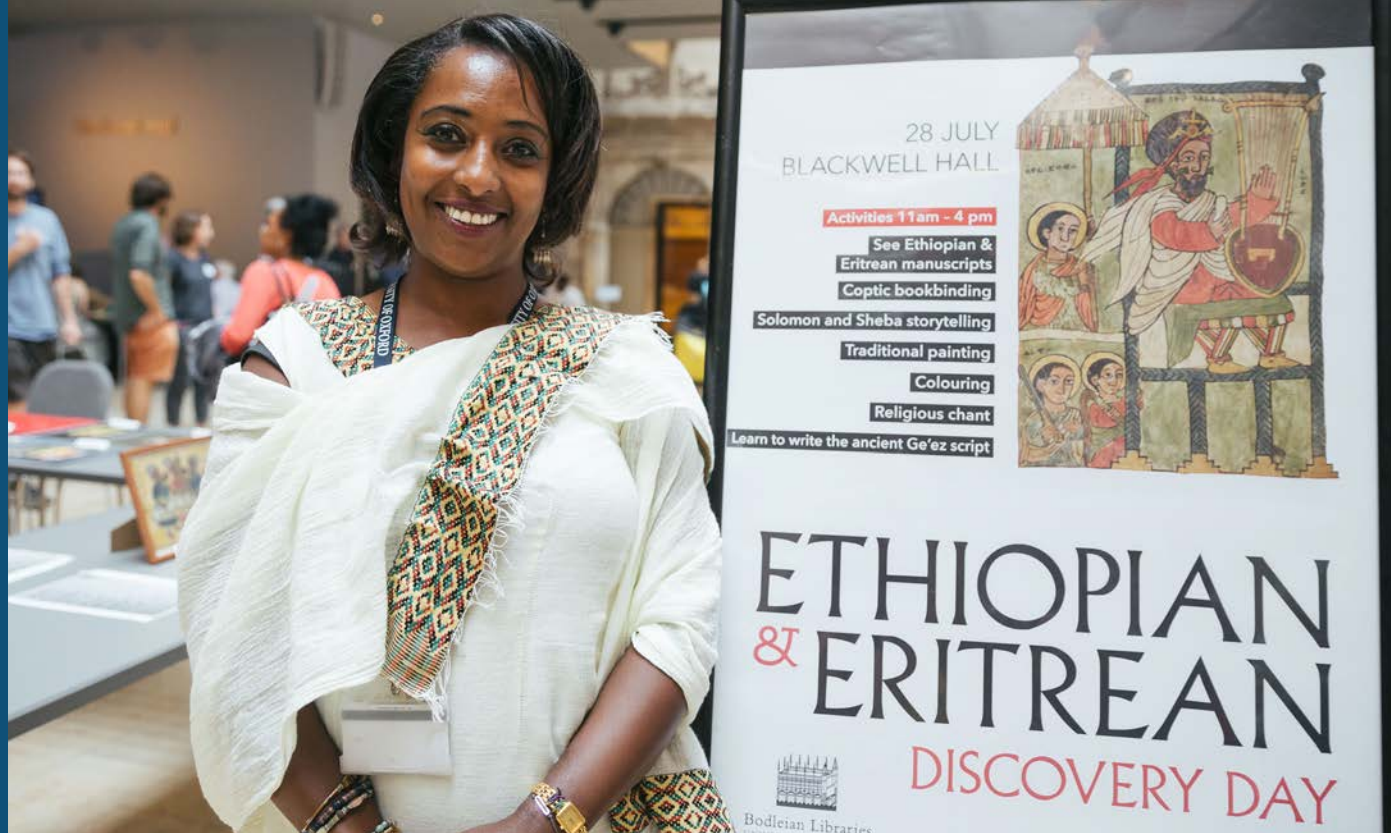
# Events

The Bodleian Libraries ran over 120 events for the public and/or school and community groups, attended by 10,080 visitors, almost double the number of attendees in 2016/17.

Events covered a range of topics varying from photography and Persian arts to paper engineering and medieval graffiti, King Alfred, and the Dictionary of National Bibliography in Oxford. The annual Lyell Lectures looked at book ownership in 17<sup>th</sup>-century England.

Practical courses included a six-week letterpress course using the Bodleian's printing presses, a five-day course on making a hand-printed book and short courses on linocut printing.

New Library Late events proved hugely popular with the public and two SaturDIY events as part of the *Sappho to Suffrage* exhibition welcomed hundreds of visitors. An Ethiopian & Eritrean Discovery Day held in July 2018 was an opportunity for members of these communities to lead storytelling, traditional chant, and calligraphy activities in Blackwell Hall. Many people also signed up to return later in the year and begin planning for a co-curated display of manuscripts and icons in summer 2019.



The Bodleian Libraries participated in Curiosity Carnival: European Research Night (29 Sept 2017), a University-wide event.



The Centre for Digital Scholarship ran numerous talks, seminars and symposia on subjects relevant to its remit as a hub for translating innovative digital technologies into multidisciplinary academic practice and public engagement.



Events with students included a joint Chaucer's World: Sixth Form Study Day (14 March 2018) with the Bodleian Library and Ashmolean Museum.



One of the rare resources preserved by the Bodleian's Department of Special Collections is the hand-press printing workshop. Programming for public courses, school visits and workshops makes this facility available to a wide audience.

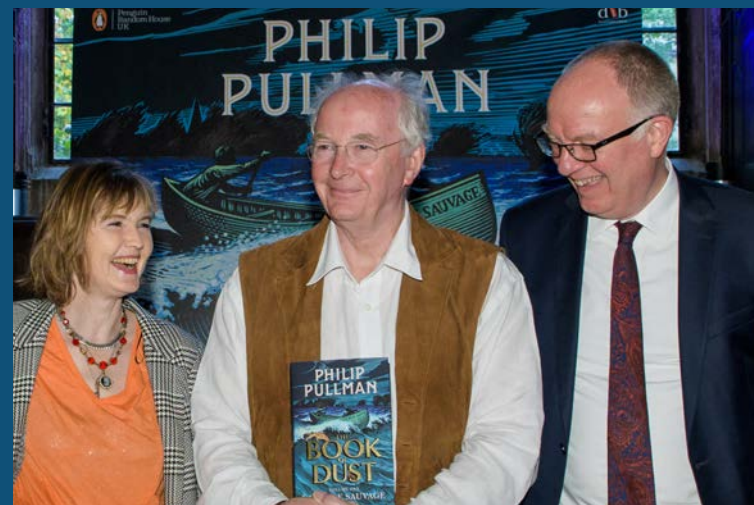
In October 2017 the Centre for the Study of the Book welcomed the first Bodleian printer in-residence, Russell Maret, for a month of practical experiment, workshops and a public lecture.



The Bodleian Libraries hosted the FT Weekend Oxford Literary Festival (17–25 Mar 2018), of which the libraries is Cultural Partner. The Bodleian Libraries also hosted the FT Weekend at the Bodleian, a livestreamed day-long programme of lectures, masterclasses and panel discussions with the *Financial Times Weekend* columnists and friends. Award-winning biographer Claire Tomalin was given the Bodleian Libraries' highest honour, the Bodley Medal, during the literary festival.



The Libraries (specifically the Taylor Institute Library, the Bodleian Library and the Radcliffe Science Library) participated in Oxford Open Doors Weekend (9–10 September 2017) and hosted a massive Jane Austen-themed event with over 2,000 visitors enjoying Regency dance lessons, curator tours, quill-writing workshops, and a theatrical performance in Convocation House based on Jane's letters to Cassandra. The Bodleian Library again hosted Shakespeare in the Quad with the Globe Theatre on Tour over two weeks in July 2018.



In autumn 2017 the Bodleian Libraries hosted the successful international launch of Philip Pullman's newest work of fiction, *The Book of Dust: La Belle Sauvage*.

# Education programme

The Bodleian's Education Programme delivers a range of free public events to inspire a love of the book in learners of all ages.

In tandem with public events, over the past year the Education team have led a number of outreach projects designed to engage harder-to-reach groups within Oxford's local community, who face barriers to cultural engagement, with the Bodleian's collections.

The Education team also manage the Bodleian Education Programme for Schools which aims to build strong working relationships with our local state secondary schools, and to offer engaging sessions for students from across the UK as part of the University's widening participation initiatives.

The Bodleian's Education Programme is generously supported by The Helen Hamlyn Trust.



School visits at the Bodleian make the most of the Libraries' vast collections, with subjects ranging from Austen and Chaucer to the English Civil War, colonial attitudes to civilisation, medieval riddles, the depiction of refugees in the Oxfam archive, and Arabic medical manuscripts.

Local sixth formers celebrated Parliament Week (November 2018) with an interactive workshop and debate at the Bodleian. Teams from two local schools visited Parliament and met the Speaker of the House, John Bercow MP. Back in Oxford, researchers and students from the Department of Politics and International Relations led sessions on debating, as students from six local schools gathered in Convocation House to debate the motion, 'This House believes that there is a right to be forgotten online'. The debate was chaired by Baroness Royall with students supported by Damian Collins MP, Dr Helena Webb, veteran Liberal Democrat peer Lord McNally and Anneliese Dodds MP. It was especially striking to see the students debate in a space which hosted Parliament in 1644, 1665, and 1681.





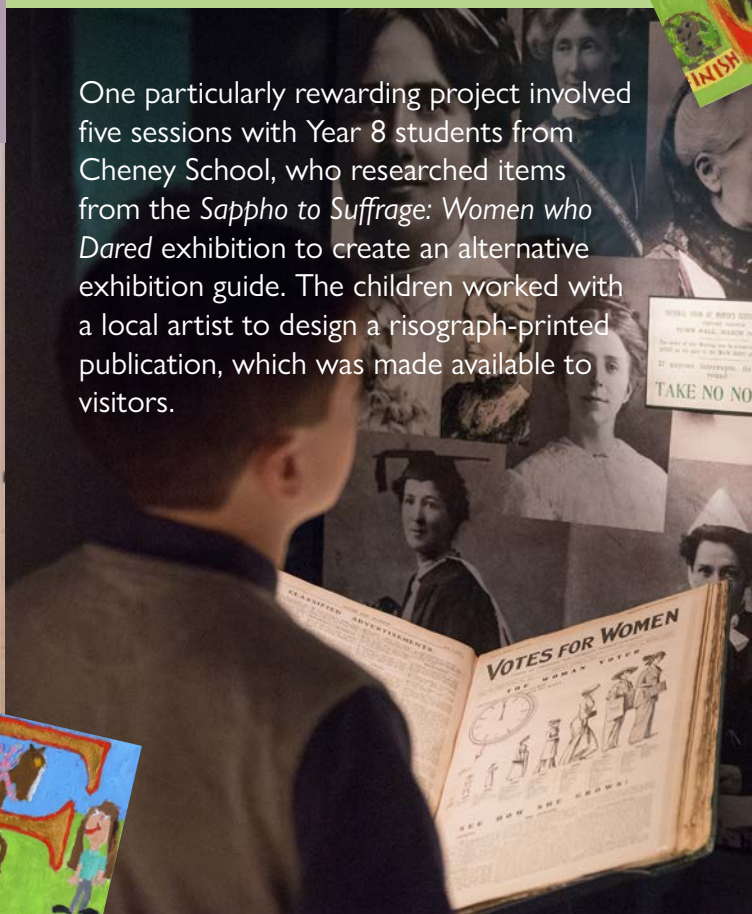


'A Day with Miss Austen' event, designed to complement the 2017 summer exhibition *Which Jane Austen?*, invited visitors to type-set and print their own programme using the historic printing press in Blackwell Hall. Over 70 people took part in the day. The printing press in Blackwell Hall of the Weston Library provides a way to engage visitors, who are fascinated by the process of creating books using traditional techniques. Future activities aim to use the equipment and expertise of the Bodleian printers for public engagement.

The 'Ballads at the Bodleian: Songs of Life and Love' project connected community choirs and adults with special educational needs and disabilities with the Bodleian's rich collection of traditional songs in broadside ballads by creating new arrangements by a local musician. These were then performed at a 'come and sing' concert in the Weston Library by four choirs. This project also included printing workshops and, as a result, we now offer regular free letterpress, risograph and linocut sessions for adult learners with SEND in partnership with Oxfordshire Adult Learning.



One particularly rewarding project involved five sessions with Year 8 students from Cheney School, who researched items from the *Sappho to Suffrage: Women who Dared* exhibition to create an alternative exhibition guide. The children worked with a local artist to design a risograph-printed publication, which was made available to visitors.



OxLibris is a major pilot project which seeks to reduce educational inequality in Oxfordshire schools by supporting local students to access academic libraries for independent study. Working with the University of Oxford's Widening Participation team and college libraries, lower sixth students are offered support with independent research skills, school research trips to Oxford libraries, and independent study sessions during the summer holidays.

A Kidlington teacher commented: "We have a world class library in the centre of our county and it would be inspirational for pupils if they could come and access it." The 2018 pilot involved 263 students and 322 student hours of library study."

# Welcoming visitors

The Bodleian Libraries welcomed 824,349 visitors to the Weston Library in 2016/17, an increase of 19% from the previous year. By the end of 2017/18 there had been over 2.6 million visits since the building opened to the public in March 2015.

At the Old Library there were a further 176,787 visits to, or tours of, the historic buildings, meaning there were over 1 million visitors across both sites.





# Retail

The Bodleian Libraries shops (the Old Schools Quad shop and The Zvi Meitar Bodleian Libraries shop in the Weston Library) also had a strong trading year, generating £1,256,747 in sales across both sites and online, a dramatic increase of 33% on 2016/17.

Other developments in retail include the launch of the redesigned Bodleian Libraries shops website at:

[www.bodleianshop.co.uk](http://www.bodleianshop.co.uk)



## BODLEIAN LIBRARY PUBLISHING

Bodleian Library Publishing made a significant contribution to the Bodleian Libraries' outreach efforts, bringing some of its rich collections to almost 100,000 (99,421) readers worldwide. 22 titles were published; highlights include the catalogue accompanying the *Tolkien: Maker of Middle Earth* exhibition, published on 1 June 2018. At 416 pages, it is the largest exhibition catalogue ever produced by Bodleian Library Publishing and over 25% of the print run was pre-sold.

In addition to the Tolkien publications, Bodleian Library Publishing produced a range of works covering everything from women in the Bodleian's collections (from Jane Austen to Ada Lovelace) to new children's books. Bodleian titles have been featured widely in the media with favourable reviews in major newspapers and magazines.

### 2017/18 CHILDREN'S TITLES

*What Can Cats Do?*  
*There was an Old Lady*

### 2017/18 ADULT TITLES

*Tolkien: Maker of Middle-earth Collector's Edition*  
*Tolkien: Treasures*  
*Tolkien: Maker of Middle-earth (PB)*  
*Tolkien: Maker of Middle-earth (HB)*  
*Georgia*  
*Ada Lovelace: The Making of a Computer Scientist*  
*Evelyn Waugh's Oxford*  
*Through the Lens of Janet Stone: Portraits, 1953–1979*  
*The Making of The Wind in the Willows*  
*A Library Miscellany*  
*Bodleian Library Treasures (HB)*  
*Designing English: Early Literature on the Page*  
*Making Medieval Manuscripts*  
*N is for Nursery*  
*What is Round?*  
*We Are Not Amused: Victorian Views on Pronunciation as Told in the Pages of Punch*  
*Revoltin' Remedies from the Middle Ages*  
*Heath Robinson: How To Be a Perfect Husband*  
*Jane Austen: The Chawton Letters*  
*The Book Lovers' Miscellany*

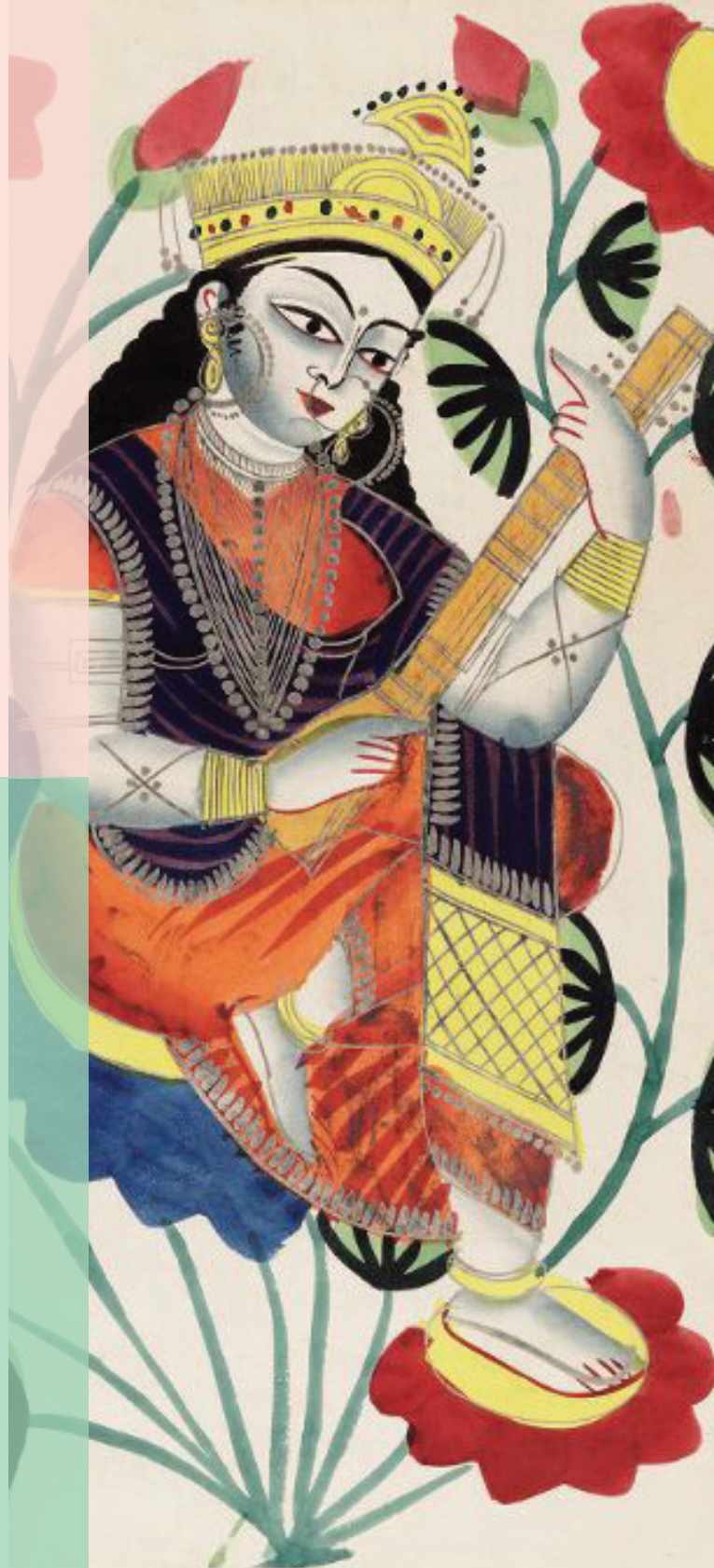


## BODLEIAN IMAGES

The Bodleian's new picture library, Bodleian Images, was soft-launched in January 2018 at <https://bodleianimages.co.uk>. The Bodleian's Imaging Services team then worked on further development of the site, tracking user searches and image usage in order to upload images to fill gaps or expand areas of interest. The new picture library resulted in a significant increase in registered users, user visits, searches and lightboxes created, with sales for 2017/18 ahead of target.

## BODLEIAN COMMUNICATIONS

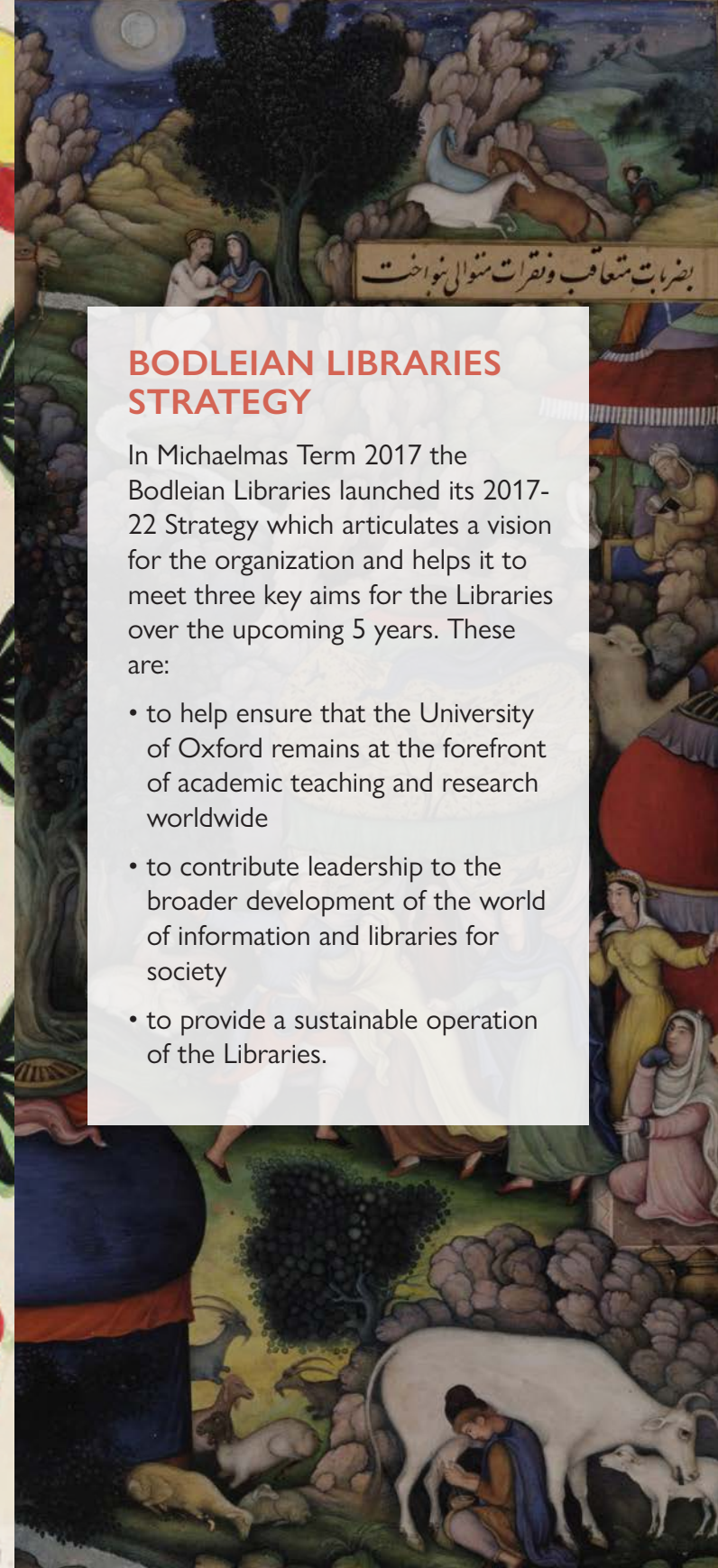
The Bodleian's Communications team led 17 media campaigns in 2017/18, achieving 6,057 mentions in the press/media, more than double the previous year. Social media followers also increased dramatically with Twitter followers rising to 63,450 and Facebook followers up 15% to 34,651. There were 610,263 social media interactions in the last year and 2,377,083 website visits. Hits on Bodleian images uploaded to Wikipedia were a staggering 49,639,494.



## BODLEIAN LIBRARIES STRATEGY

In Michaelmas Term 2017 the Bodleian Libraries launched its 2017-22 Strategy which articulates a vision for the organization and helps it to meet three key aims for the Libraries over the upcoming 5 years. These are:

- to help ensure that the University of Oxford remains at the forefront of academic teaching and research worldwide
- to contribute leadership to the broader development of the world of information and libraries for society
- to provide a sustainable operation of the Libraries.



# Philanthropic Support

During 2017/18, over £12.5 million was raised in support of the Libraries' core mission. The Bodleian received a number of significant legacies over the year and a substantial gift from the British Foundation for the Study of Azerbaijan and the Caucasus, supporting a range of endowed positions and activities relating to our Arabic, Persian and Turkish collections. By year end, the Bodleian's endowment stood at £82.7 million, an increase of £16.9 million from the year before.

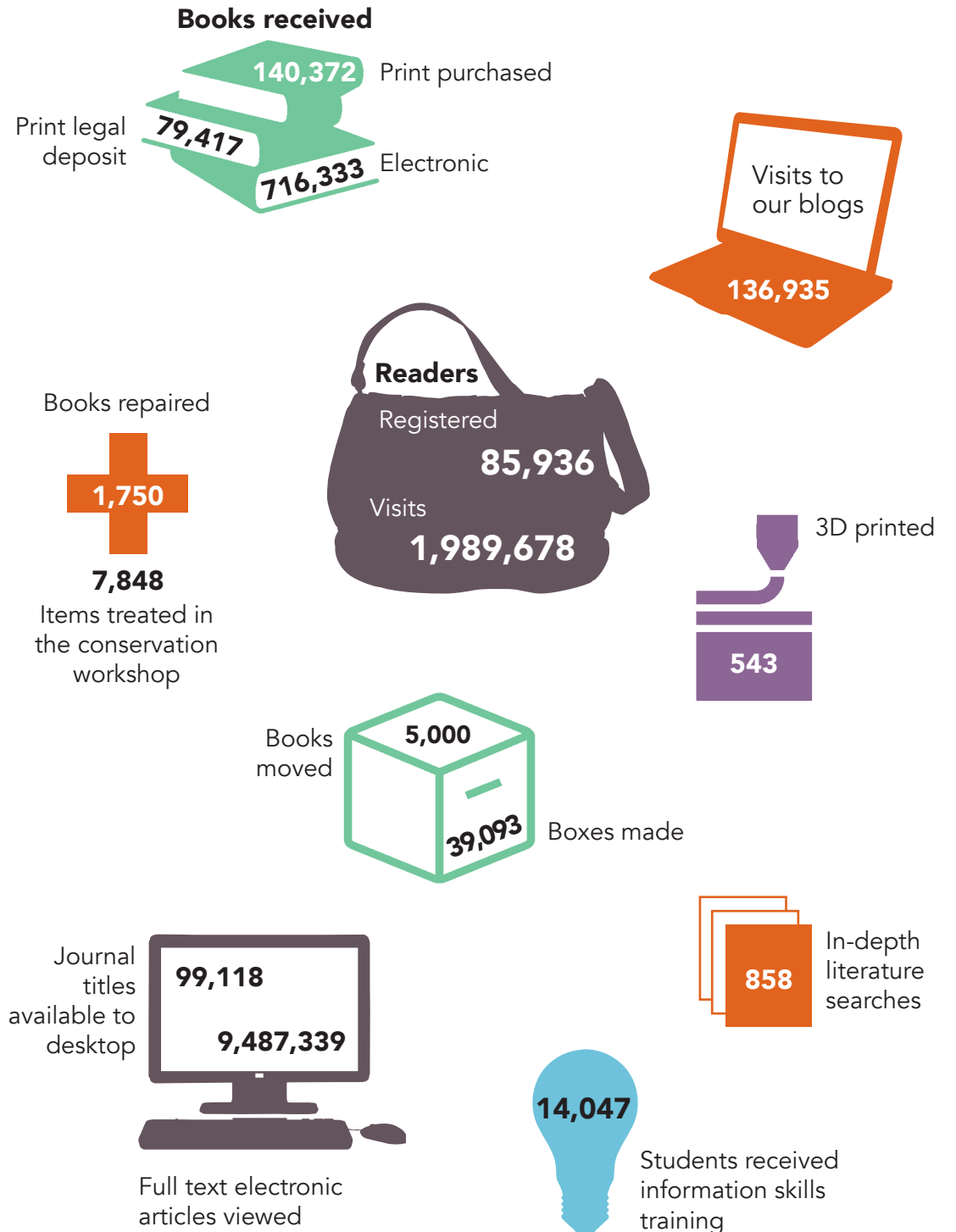
Support from the Helen Hamlyn Trust enabled the Bodleian Libraries to appoint its first dedicated Education Officer in 2017 who has developed a new education and outreach programme for schools and the local community. By year end 2017/18 more than 1,600 students (85% from UK state schools) had participated in sessions helping familiarise them with the role of a Library in research, and experiencing Oxford as part of the University's existing widening participation activities.

Bodleian Libraries' donors contributed more than £40,000 to catalogue and make available the archives of Denis Healey, Janet Stone and Louis MacNeice. This means these important archives are available to readers and researchers in full for the first time benefitting the study of British politics, photography, poetry and literature.

In 2017/18 the Bodleian Libraries received an extraordinary £7.5m in legacy gifts from individuals benefitting the library in a number of ways. Two separate endowment funds for the curation and acquisition of literary manuscripts, and also for medieval manuscripts were established in honour of three major legacy donors. Such generosity ensures that the Bodleian Libraries can continue to build its collections and go on sharing knowledge and inspiring scholarship for future generations.

The Polonsky Foundation supported a collaborative project between the Bodleian Libraries and the Vatican Library (Biblioteca Apostolica Vaticana) making more than 1.5 million pages from the two libraries' collections of Greek, Hebrew and Latin manuscripts available in digital format. These have now collectively been viewed over 500,000 times by scholars and researchers across the world.

# Year in the life of the Bodleian



Databases searches **13,273,565**

**13,829,613** Searches on SOLO, the Libraries catalogue

Data sets entered into Oxford Research Archive (ORA) **158**

Full text items entered in to ORA **16,527**

Accesses to items in ORA **835,383**

**820** Metres of archives acquired

**10,299,966** Electronic book chapters viewed

**£1,256,747** Shop sales

Views of a digitized books or manuscripts

**950,528**

Tour **82,836** **93,951** Divinity School  
**824,349** Blackwell Hall

**49,698**  
**26,569**  
**125,512**  
**408,404**

**101,136** Pages provided in alternative formats for print-disabled students

Visitors to exhibitions **369,842**  
**71,097**

Number of loans **1,051,390**

**10,080** Widening engagement event participants

**317,932** **214,637** Book Storage Facility ingested and fetched

Visitors to online exhibitions

**103** Books being guided through the publication process  
**99,421** Books sold

**2,121** Request made to obtain items from other libraries  
**1,967** Items supplied to other libraries

**6,057** Mentions in traditional print media

<b>END OF YEAR ACCOUNTS (£)</b>	<i>2017-18</i>	<i>2016-17</i>	<i>2015-16</i>	<i>2014-15</i>
Staff expenditure	£22,412,741	£21,770,153	£21,347,417	£20,240,419
Information provision expenditure	£8,751,478	£8,295,229	£8,068,287	£8,153,776
APC expenditure	£2,137,332	£2,876,692	£2,361,575	£ 1,047,549
Other expenditure	£15,513,068	£15,902,062	£14,216,840	12,448,096
<b>Total gross expenditure</b>	<b>£48,814,618</b>	<b>£48,844,136</b>	<b>£45,994,119</b>	<b>£41,889,840</b>
University funding	£32,844,000	£32,521,666	£30,460,861	£30,948,013
HEFCE NRL grant	£1,897,947	£1,897,947	£1,897,947	£1,897,947
Other income – internal	£644,199	£675,249	£665,123	£702,166
Other income – external	£13,428,420	£13,307,170	£12,886,691	£8,281,170
<b>Total income</b>	<b>£48,814,566</b>	<b>£48,402,032</b>	<b>£45,910,622</b>	<b>£41,829,296</b>





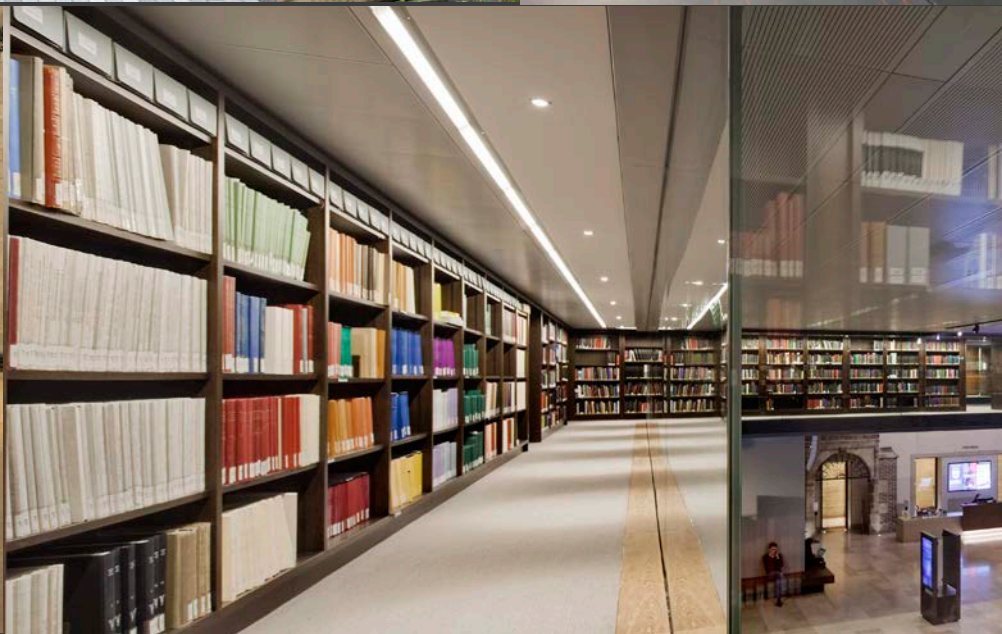
# Our libraries

There are 28 libraries across the Bodleian Libraries supporting the divisions, departments and research centres of the University as well as the specialist areas of the collections.

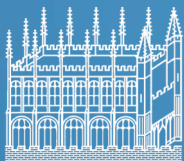
Alexander Library of Ornithology  
Bodleian Education Library  
Bodleian Health Care Libraries  
– Cairns Library, John Radcliffe Hospital  
– Horton Library, Horton General Hospital  
– Knowledge Centre  
– Nuffield Orthopaedic Centre  
Bodleian History Faculty Library  
Bodleian Japanese Library  
Bodleian KB Chen China Centre Library  
Bodleian Latin American Centre Library  
Bodleian Law Library  
Bodleian Library – Old Library  
Bodleian Library – Radcliffe Camera  
Bodleian Library – Weston Library  
Bodleian Music Faculty Library  
Bodleian Oriental Institute Library  
Bodleian Social Science Library  
English Faculty Library  
Leopold Muller Memorial Library  
Philosophy and Theology Faculties Library  
Radcliffe Science Library  
Rewley House Continuing Education Library  
Sackler Library  
Sainsbury Library at Saïd Business School & Egrove Park  
Sherardian Library of Plant Taxonomy  
Taylor Institution Library  
Tylor Library  
Vere Harmsworth Library at the Rothermere American institute  
Wellcome Unit for the History of Medicine Library

See list at [www.bodleian.ox.ac.uk/subjects-and-libraries/libraries/bodleian](http://www.bodleian.ox.ac.uk/subjects-and-libraries/libraries/bodleian)





All images credited to the Bodleian Libraries (@Bodleian Libraries, University of Oxford) with the exception of:  
**Dan Paton** front cover, inside front cover, pg 5 (top & bottom left), pgs 13, 16, 35; **James Brittain** pg 4, 7; **Martin Parr** pg 23, left; **Lauren Maccabee** pgs 7, 22, 32-33; **Angelsharp** pg 38



Bodleian Libraries



UNIVERSITY OF  
**OXFORD**

